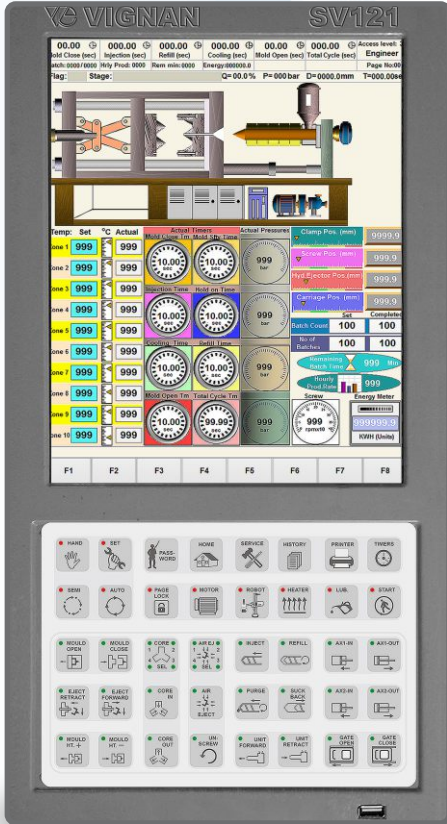


# SV121

## For Injection Molding Machine



- Rich Color **TOUCH SCREEN** in 12.1" potrait format.
- 16.2 million-colors**, with **1024\*768 resolution**, **106ppi** clarity.
- Robust, standardized, adapted to reflect the world of Windows® optimised to meet new challenges.
- Traditional and familiar **VIGNAN** controls with best-of-breed ergonomics.
- Feather touch **40 keys** with LED indication for safe & efficient machine operations.
- Modular Inputs/Outputs interface capability based on machine demands.

### MMI TECHNICAL SPECIFICATIONS

<b>MMI Core</b>	32-Bit ARM-Cortex M3 Embedded Processor
<b>LCD Backlit</b>	LED-type, digitally controlled contrast
<b>Machine Scan Time</b>	1 msec fixed (1000 times/sec)
<b>MMI Scan Time</b>	1 msec fixed (1000 times/sec)
<b>No. of Mold Programs</b>	150
<b>Communications Ports</b>	1xUSB(2.0), 1xEthernet, 1xRS232
<b>I/O Board Interface</b>	UTP CAT 6 Cable, with remote interface upto 50m
<b>History Database Memory</b>	2GB, data retention for machine lifetime
<b>Optional Modules</b>	GSM Module Interface, Voice Annunciation
<b>Ergonomics</b>	Elegant aesthetics, ABS blend enclosure, rugged-built with shock absorbing lining
<b>Weight</b>	1500gms
<b>Operating Temperature</b>	0-70°C



**Vignan Electronics (P) Ltd.**

*Imagine. Inspire. Automate.*